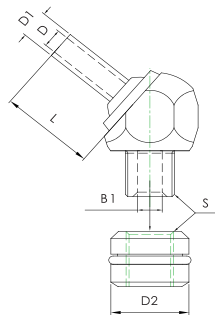
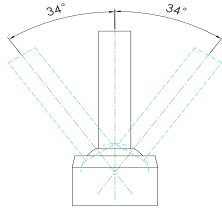
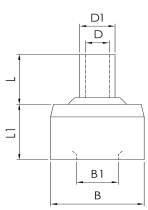


## ■ Mounted High Pressure Adjustable Nozzle



| 형식<br>ITEM | 규격<br>SPECIFICATIONS | 주요 치수 |    |    | MAJOR SIZE |     |         | unit (mm) |
|------------|----------------------|-------|----|----|------------|-----|---------|-----------|
|            |                      | D     | L  | D1 | L 1        | B 1 | 육각이 (B) |           |
| JTDP-10    | Ø10×Ø2               | 2     | 1  | 3  | 8          | 4.5 | 10      |           |
| JTDP-12-5  | Ø12×Ø2×5L            | 2     | 5  | 4  | 8          | 5.5 | 12      |           |
| JTDP-14-8  | Ø14×Ø3×8L            | 3     | 8  | 5  | 8          | 7   | 14      |           |
| JTDP-15-5  | Ø15×Ø4×5L            | 4     | 5  | 6  | 8          | 7   | 15      |           |
| JTDP-15-10 | Ø15×Ø4×10L           | 4     | 10 | 6  | 8          | 7   | 15      |           |
| JTDP-15-30 | Ø15×Ø4×30L           | 4     | 30 | 6  | 8          | 7   | 15      |           |
| JTDP-15-50 | Ø15×Ø4×50L           | 4     | 50 | 6  | 8          | 7   | 15      |           |
| JTDP-16-5  | Ø16×Ø4×5L            | 4     | 5  | 6  | 11         | 7   | 16      |           |
| JTDP-16-10 | Ø16×Ø4×10L           | 4     | 10 | 6  | 11         | 7   | 16      |           |
| JTDP-16-30 | Ø16×Ø4×30L           | 4     | 30 | 6  | 11         | 7   | 16      |           |
| JTDP-16-50 | Ø16×Ø4×50L           | 4     | 50 | 6  | 11         | 7   | 16      |           |



## ■ Easy Jet-On High Pressure Adjustable Nozzle

| 형식<br>ITEM     | 규격<br>SPECIFICATIONS | 주요 치수 |   |         | MAJOR SIZE |    |     | unit (mm) |
|----------------|----------------------|-------|---|---------|------------|----|-----|-----------|
|                |                      | D     | L | 나사 (S)  | L          | D1 | B 1 | 육각이 (B)   |
| JTAT-14-1/8-10 | 1/8"PT- Ø4×10L       | 14    | 4 | PT 1/8" | 10         | 6  | 6   | 17        |
| JTAT-14-1/8-30 | 1/8"PT- Ø4×30L       | 14    | 4 | PT 1/8" | 30         | 6  | 6   | 17        |
| JTAT-14-1/8-50 | 1/8"PT- Ø4×50L       | 14    | 4 | PT 1/8" | 50         | 6  | 6   | 17        |
| JTAT-15-1/8-10 | 1/8"PT- Ø4×10L       | 15    | 4 | PT 1/8" | 10         | 6  | 6   | 17        |
| JTAT-15-1/8-30 | 1/8"PT- Ø4×30L       | 15    | 4 | PT 1/8" | 30         | 6  | 6   | 17        |
| JTAT-15-1/8-50 | 1/8"PT- Ø4×50L       | 15    | 4 | PT 1/8" | 50         | 6  | 6   | 17        |
| JTAT-16-1/8-10 | 1/8"PT- Ø4×10L       | 16    | 4 | PT 1/8" | 10         | 6  | 6   | 17        |
| JTAT-16-1/8-30 | 1/8"PT- Ø4×30L       | 16    | 4 | PT 1/8" | 30         | 6  | 6   | 17        |
| JTAT-16-1/8-50 | 1/8"PT- Ø4×50L       | 16    | 4 | PT 1/8" | 50         | 6  | 6   | 17        |
| JTAT-18-1/8-10 | 1/8"PT- Ø4×10L       | 18    | 4 | PT 1/8" | 10         | 6  | 6   | 17        |
| JTAT-18-1/8-30 | 1/8"PT- Ø4×30L       | 18    | 4 | PT 1/8" | 30         | 6  | 6   | 17        |
| JTAT-18-1/8-50 | 1/8"PT- Ø4×50L       | 18    | 4 | PT 1/8" | 50         | 6  | 6   | 17        |